

Canon

imageRUNNER™
2200 / 2800 / 3300



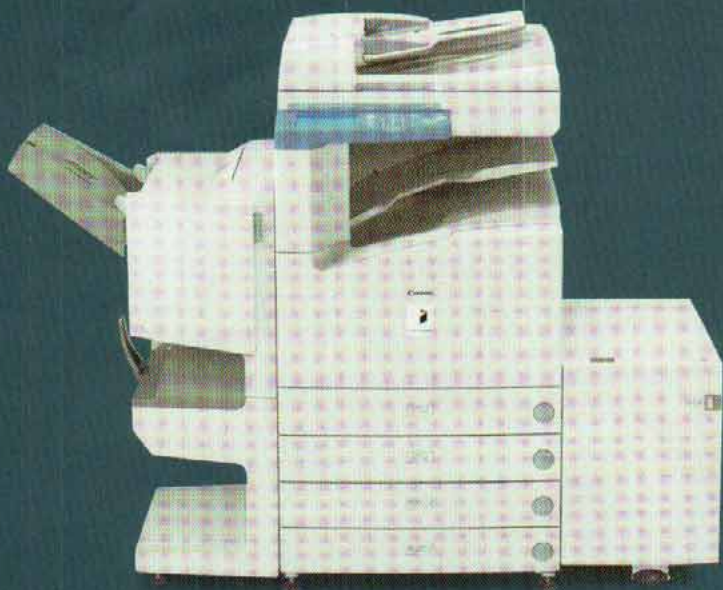
imageRUNNER™
2200 / 2800 / 3300



NEW-GENERATION, DIGITAL-MULTIFUNCTION WORKGROUP SOLUTIONS FROM THE INDUSTRY LEADER.

Introducing the new imageRUNNER™ 2200/2800/3300 from Canon—offering unsurpassed performance in stand-alone or networked document-management environments.

Built upon Canon's newly developed, network-oriented architecture, termed imagePlatform, the imageRUNNER 2200/2800/3300 offer 22-, 28-, and 33-page-per-minute speeds, respectively, with advanced copy, print, scan, and fax features, and the highest levels of image quality, network integration, and elevated multi-tasking capabilities on the market. Designed specifically for the needs of corporate workgroups, the imageRUNNER 2200/2800/3300 allow your organization to manage its hard-copy and electronic-based information, regardless of form, content, or location, to give you the levels of efficiency you are accustomed to, plus a competitive advantage.



Network Connectivity Should Not Be An Afterthought

Why Stand-alone When You Can Connect

Canon's clear advantage lies in our seamless integration with customer networks, giving users the ability to leverage system capabilities from their desktops. In choosing Canon products, your organization will benefit from initial investment protection other manufacturers simply cannot match.

A New Level Of Printing Functionality

The imageRUNNER 2200/2800/3300 are ideally suited to handle the printing requirements of workgroups and departments, with a print controller capable of handling 10/100 Ethernet or Token Ring connections, using PostScript® 3 Emulation and PCL®5e and PCL 6 print languages.

Canon has created print driver software designed with an easy-to-use user-interface that is friendly for the novice, yet capable enough to handle the demands of power-users. The driver software displays a dynamic image of the device, indicating installed hardware options, paper size, and paper levels. As attributes change, the driver automatically informs the users of the latest device capabilities. To further simplify use, Canon offers the ability to view page layout settings from within the driver prior to printing. Using this driver capability, users are assured their output will print as expected, with no surprises.

Other significant capabilities include the ability to save frequently used print settings, annotate documents, add watermarks, and select extensive document-finishing and booklet-making features.

We haven't forgotten the network administrator! Canon offers multiple installation methods, and ships the only driver software available on the market capable of discovering devices on the network. This allows administrators to automatically configure all equipped options with just a click of the mouse.

Canon has equipped these systems with extensive printing capabilities not found on traditional network laser printers. Some of these enhanced capabilities include the following:

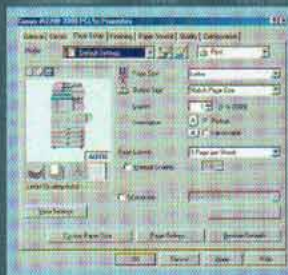
Mail Box Printing – Users can send print data to personal mail boxes for integration with other stored images, thereby creating new compound documents.

Page Composer – Users can combine and print documents that were created in different applications as a single document, preview and manipulate the merged file through a thumbnail view, and change settings on-the-fly.

Secured Print – Permits entry of a confidential PIN from within the print driver. Printing will begin only upon user-entry of his/her confidential PIN number at the device.



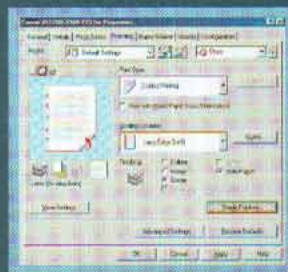
User Mail Box Screen



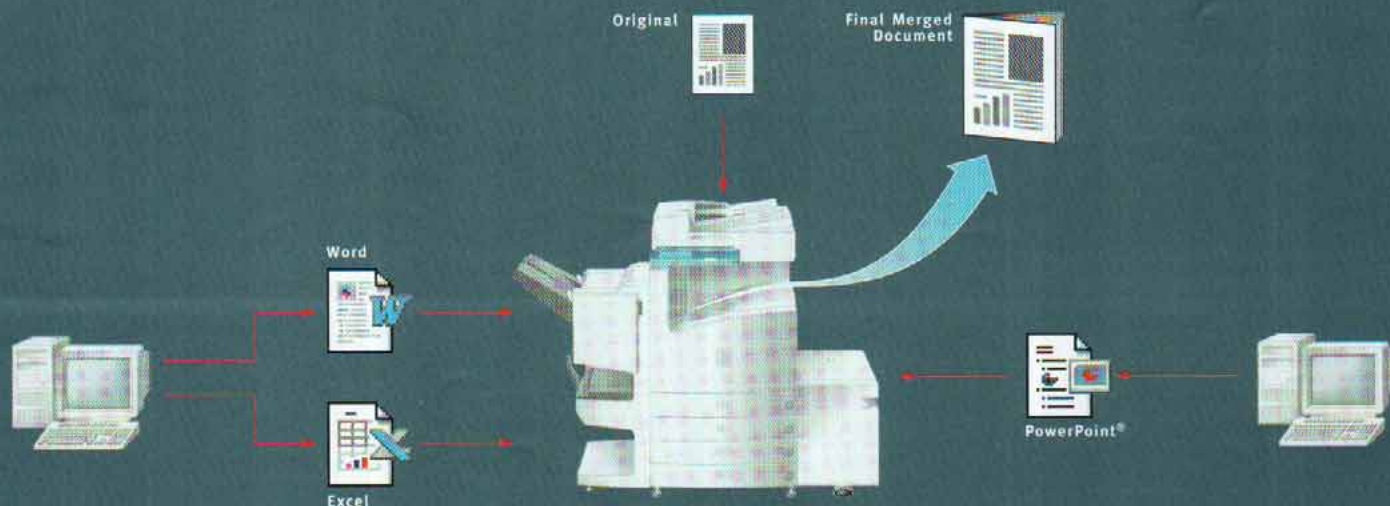
Print Driver Page Setup Tab



Page Composer Screen



Driver Properties Finishing Tab



Merge scanned images with documents from various applications to create one document.

Bridging The Paper And Digital Worlds

Merging Hard-copy And Electronic Information

Today, while most new information is created electronically, it is estimated that the majority of corporate information still resides on paper. The imageRUNNER 2200/2800/3300 permit easy integration of paper and electronic information to streamline information availability and management.

Each imageRUNNER 2200/2800/3300 ships standard with the ability to scan documents to internal user mail boxes. Users may also view images stored in a mail box through the Remote UI function. This function is ideally suited to users who wish to combine scanned documents with electronic print documents at the device.

For network scanning and workflow requirements, Canon's Network TWAIN driver software provides enhanced scanning capabilities on the imageRUNNER 2200/2800/3300 through any TWAIN-compliant software application.

Faxing More Capable Than Stand-alone Devices*

The imageRUNNER 2200/2800/3300 provide fax capabilities far more capable than most stand-alone devices available on the market today.

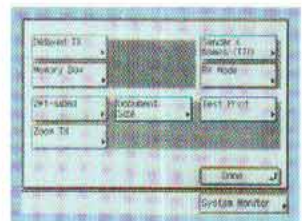
At 33.6 Kbps transmission speed, or approximately 3 seconds per page**, users will save time and dramatically reduce transmission costs. With the optional DADF, you can greatly enhance faxing productivity by scanning simplex or duplex documents of sizes up to A3. Canon's world-class leadership in image quality will ensure that both sent and received fax transmissions will be clear and legible.

Address Book – Stores frequently used destinations through one-touch buttons and coded-dial numbers through the touch-screen user-interface panel.

Memory Reception – The device can be programmed to hold all incoming documents in memory prior to printing. Through a web browser, users can then preview the contents of the received document for easy identification prior to printing or deleting, if necessary.



Main Fax Screen



Fax Screen Special Features

*Available first quarter 2002.
Check with your local Canon-authorized Dealer for availability.
**Approximate 3-second-per-page fax transmission time based on ITU-T No. 1 Chart (MMR, Standard Mode) at 33.6 Kbps modem speed when transmitting to another V.34 machine. The Public Switched Telephone Network (PSTN) currently supports 28.8 Kbps modem speeds or lower, depending on telephone line conditions.

multifunction
printing

The imageRUNNER 2200/2800/3300 provide all the necessary tools for quick and intuitive operation of all device functions—saving you valuable time to do other tasks.



A Truly Modular System

The imageRUNNER 2200/2800/3300 deliver new-generation, digital-multifunction capabilities designed to meet every application need and budget of small- to medium-sized enterprises. Each model offers advanced digital copying features as standard, including the scanning of hard-copy originals into an internal Mail Box system. As a truly modular system, each imageRUNNER 2200/2800/3300 can be configured to address the Network Printing, Super G3 Faxing, and Network Scanning requirements of workgroups as needed.

Increased Productivity Without Compromises

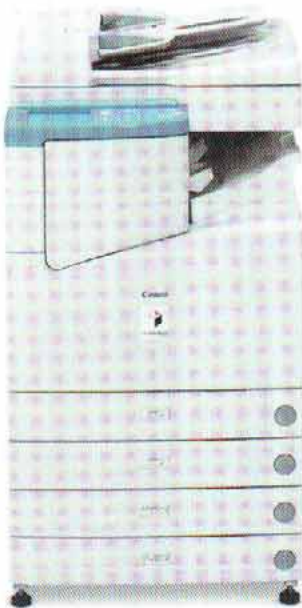
When short deadlines need to be met, the imageRUNNER 2200/2800/3300 are up to the task. With Scan-Once-Print-Many technology and enhanced multifunction capabilities, the imageRUNNER 2200/2800/3300 accelerate copy, print, fax, or scan job completion, while driving significant document-throughput capabilities.

Each imageRUNNER 2200/2800/3300 delivers many of the advanced features typically associated with high-volume, high-priced systems, such as Copy Reservation, Job Build, Booklet Printing, and more. Easy-to-use device drivers and utilities provide users and administrators with unmatched levels of device status and job-management capabilities in the industry.

With Canon's proprietary RAPID Fusing System™, the imageRUNNER 2200/2800/3300 provide quick, on-demand operation that virtually eliminates the long warm-up periods typically associated with conventional devices, and help reduce energy consumption costs. A compact, "wingless" design brings powerful features to your workgroup, without compromising office space.

Superior Image Quality Is Always Standard

No matter which product configuration you choose, Canon's world-class leadership in image quality—capturing the highest levels of detail in every document—is standard on every imageRUNNER 2200/2800/3300. Delivering copy output at 1200 x 600 dpi resolution, and print output at an astounding 2400 x 600 dpi resolution, you'll find yourself asking, "Is this a copy, or the original?"



Print Driver Device Configuration Tab



Remote UI™

digital
multifunction

Raise Your Productivity To New Standards

Set New Expectations For Office Productivity

At their core, the imageRUNNER 2200/2800/3300 provide unique functionality and information-management via an internal 5.1GB Image Server and 128MB of RAM. Examples of these features include the following:

Scan-Once-Print-Many – Fully leverages the inherent digital features of the device, and reduces scanner wear by making copies from images stored in memory.

Concurrency – Elevates overall multitasking capabilities by synchronizing scanner, image processor, and engine operation. As an example, users can store up to five copy jobs in memory while current copy or print jobs are being processed.

Confidential Mail Boxes – Up to 100 mail boxes can accept scanned and printed data, permitting users to easily combine paper- and electronic-based information.

Advanced Input, Throughput, And Output Features

While most multifunction devices are content just to deliver the basics, the imageRUNNER 2200/2800/3300 offer the most extensive levels of input, throughput, and output capabilities in their class.

For maximum input productivity, an optional 50-sheet capacity Duplexing Automatic Document Feeder (DADF) makes quick work of handling multipage and different-size

originals. The DADF leverages Trayless Duplexing of the device, and works with a newly designed scanning unit for fast first-copy output times.

The imageRUNNER 2200/2800/3300 ship with a standard paper capacity of 1,050 sheets, and offer the flexibility to support up to 4,550 sheets. With support for feeding non-standard paper sizes and weights, transparencies, and envelopes, the imageRUNNER 2200/2800/3300 can address the volume requirements of virtually any size workgroup.

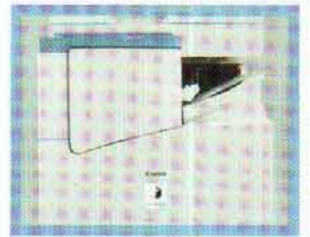
The imageRUNNER 2200/2800/3300 offer the most advanced finishing features of any product in their class.

An optional internally mounted finishing unit makes the imageRUNNER 2200/2800/3300 ideally suited for environments with limited space, and for small office environments that require professional-looking, finished documents.

For more advanced document-finishing needs, choose the optional Saddle Finisher, which offers stapled output, including multi-position stapling, folded saddle-stitched booklets, and support for two- or three-hole-punched output. An inner tray system works with the Saddle Finisher to neatly separate copy, print, and fax output for fast distribution.



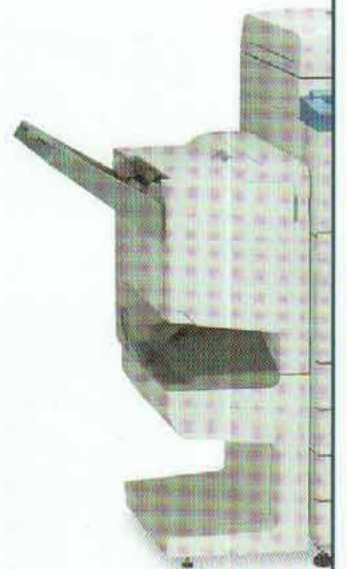
Duplexing Automatic Document Feeder



Internal Finisher



Paper Cassettes



Saddle Finisher



digital multifunction

An All-star Player Sporting All The Tools

No One On Your Team Will Feel Stranded

The imageRUNNER 2200/2800/3300 come equipped with a comprehensive set of system utilities designed to simplify operation and management for both end-users and network administrators. These tools provide easy device installation and network management, while supplying a level of device-status and job-management capabilities unmatched in the industry.

You Need To Do More Than Just Connect To The Network

To truly support customer requirements, networked devices must be easy to install, provide seamless integration with existing network-management applications, and permit management from anywhere in the enterprise. Canon's comprehensive solution to these customer requirements is embodied within Canon's NetSpot® Suite and Remote UI utilities.

Canon's NetSpot Suite consists of the following utilities:

NetSpot Console – NetSpot Console is a web-based installation and management utility capable of installing and managing Canon networked systems on most customer networks from anywhere within the enterprise. In addition to basic installation support, NetSpot Console delivers notification of device status conditions, such as low toner, paper jams, and others. For added convenience, NetSpot Console is also capable of managing third-party printers complying with the standard Printer MIB, thereby consolidating network device management via one utility.

NetSpot Job Monitor – To track progress and manage print jobs, Canon supplies NetSpot Job Monitor, which runs as an automated task in the Windows® System Tray, and can be configured to report job conditions based on administrator or end-user preferences.

Significant to NetSpot Job Monitor is its ability to deliver end-of-job notification to end-users, ensuring that they are informed of the completion of submitted work.

NetSpot Accountant – NetSpot Accountant is an optional utility capable of providing comprehensive job tracking and analysis for cost accounting and workflow optimization. Using NetSpot Accountant, network administrators can track a myriad of activity, including copying, printing, and scanning, and bill internal or external clients for device utilization. NetSpot Accountant is ideal for any customer who desires to account for imageRUNNER 2200/2800/3300 device utilization.

In addition to these utilities, Canon also supplies plug-in modules for most popular enterprise-management applications in use today. Included in this list of supported applications are Microsoft® Management Console, CA-Unicenter TNG®, HP® OpenView®, Tivoli® NetView®, and BMC Patrol®. Through these plug-ins, Canon permits easy management of Canon networked devices from directly within the enterprise-management system console.

Remote UI – The Remote UI function turns any web browser into an imageRUNNER 2200/2800/3300 desktop command and control center. Simply enter the IP address of the remote device to get instant access to job status, address book, media options, program settings, and more. In addition, users can stop, start, or reprint jobs or view images that were previously stored in an internal mail box from anywhere on the network.

An Impressive Team

Canon's pioneering efforts in creating the digital multifunction marketplace has provided us with a considerable advantage in identifying emerging customer needs. This experience, combined with our



NetSpot Console Device List Selection



NetSpot Job Monitor Status Notification Device



NetSpot Accountant Device List Display



Remote UI

exhaustive funding of new research and development, has allowed us to assume a commanding position in today's office and production environments.

Our goal is simple: to provide the best solutions to your document- and information-management needs. We think you will agree that Canon's functional and integrated network capabilities set new benchmarks in the marketplace, and clearly enable our customers to drive greater levels of productivity, efficiency, and a competitive advantage.



imageRUNNER™
2200 / 2800 / 3300

imageRUNNER 2200/2800/3300 Specifications

Main Unit

Type: Digital, Multifunction Imaging System
 Imaging System: Laser Dry Electrostatic Transfer
 Developing System: Dry Monocomponent Toner Projection
 Fixing System: RAPID Fusing System
 Image Server Memory: Standard 128MB RAM + 5.1GB HDD (Max. Capacity: Approx. 4,000 Originals)
 First-copy Time: 10 Seconds or Less From Platen Glass
 6.6 Seconds from ADF
 Warm-up Time: 29 Seconds or Less From Sleep Mode
 29 Seconds from Main Power Off
 Copy/Print Speed: 22/28/33 ppm (A4)
 Max. Mail Boxes Supported: 100
 Max. Copy Reservation: 5 Jobs
 Actual Resolution: 600 dpi x 600 dpi
 Interpolated Resolution: 1200 dpi x 600 dpi (Copy)
 2400 dpi x 600 dpi (Print)
 Half-tone: 256 Gradations of Gray
 Duplexing: Standard Automatic Trayless Duplexing
 Magnification Reduction/Enlargement: 25% to 800% (in 1% increments)
 Paper Supply Standard: Dual 500-sheet Paper Cassettes (1,000 Sheets)
 Stack Bypass (50 Sheets)
 Optional: Dual 500-sheet Paper Cassettes (1,000 Sheets)
 Paper Deck (2,500 Sheets)
 Exposure Control: Automatic or Manual
 Multiple Copies: 1 to 999
 Max. Original Size: A3
 Paper Weights: 64 to 80g/m² (Cassette)
 64 to 128g/m² (Stack Bypass)
 Power Source: 230V AC, 50Hz, 6A
 Drum: OPC—Estimated Yield: 55,000 Impressions
 Max. Duty Cycle: imageRUNNER 2200—75,000, imageRUNNER 2800—100,000, imageRUNNER 3300—120,000 Impressions Per Month
 Toner: Estimated Yield: 15,000 Images (at 6% Coverage)
 Dimensions (H x W x D): 769mm x 565mm x 678mm
 Weight: Approx. 80kg

Duplexing Automatic Document Feeder-H1 (Optional)

Acceptable Originals: B5R A3
 Capacity: 50 Sheets (80g/m², A4)
 Max. Paper Weight: 128g/m² (A4)

Cassette Feeding Unit-W1 (Optional)

Paper Capacity: 2 x 500-sheet Paper Cassettes
 Paper Size: Top Cassette: B5R to B4
 Bottom Cassette: B5R to A3
 Paper Weights: 64 to 80g/m²

Envelope Feeder Attachment-B1 (Optional)

Envelope Size: COM10, DL, Monarch, ISO-B5, ISO-C5, Yougata-4
 Approx. 50 Envelopes or 31.75mm
 Feeder Capacity:

Paper Deck-L1 (Optional)

Paper Capacity: 2,500 Sheets (80g/m²)
 Paper Size: A4
 Paper Weights: 64 to 80g/m²

Finisher-J1 (Optional)

Number of Trays: One Tray
 Tray Capacity: 300 Sheets (A4)
 Staple Position/Capacity: Top Corner (30 Sheets)

Saddle Finisher-G1 (Optional)

Number of Trays: Four trays, including Saddle-stitch Tray and Inner 2-Way Tray
 Tray Capacity: Top Tray: 1,000 Sheets (A4)
 Inner 2-Way Tray: 100 Sheets (A4)
 250 Sheets (A4)
 Saddle-stitch Tray: 500 Sheets
 Staple Position: Multiposition Stapling (1) Top Corner, (2) Side Margin, (3) Saddle-stitch
 Stapling Capacity: 50 Sheets (A4)
 10 Sheets Saddle-stitched (A4, A3)

Saddle-stitch Specifications

Total Sides Imaged: 40 (10 Sheets)
 Total Sets: 1 to 5 Sheets/20 Saddle-stitched Sets
 6 to 10 Sheets/10 Saddle-stitched Sets
 Folding: V-folding Standard
 Attachable Accessories: Puncher Unit-J1

Puncher Unit-J1 (Option for Saddle Finisher-G1)

Punch Method: Sequential Processing System
 Punch Types: 2-hole
 Paper Sizes: A4R, B4
 Punch Dust Stock: Approx. 3,000 Sheets

Super G3 Fax Board-J1 (Optional)*

Applicable Line: Public Switched Telephone Network (PSTN)
 One (1)
 Connection Lines: ECM-MMR Approx. 3 Seconds per Page (33,600 bps)
 Transmission Time**: MMR, MR, MH, JBIG
 Compression System: B5 to A3
 Sending Sizes: Address Book: 200 Destinations
 Auto Dial Function: Approx. 3,700 Pages
 Image Memory:

Network Multi-PDL Printer Kit-C1 (Optional)

Type: Embedded Print/Network
 Processor: Canon Custom Processor 250 MHz—Shared
 RAM: 128MB (Std./Max.)—Shared
 Hard Disk: 5.1GB—Shared
 PDL Support: PCL 5e, PCL 6, PostScript 3 Emulation

Internal Fonts: 136 PostScript Fonts, 117 Adobe® Type Fonts, 19 TrueType® Fonts, 80 PCL Roman Fonts, 32 PCL Bar-code Fonts
 Interface Connections: RJ-45 (10/100Base-T)
 IEEE 1284 (Compatibility: Nibble, Byte and ECP mode)
 Token Ring (Optional Card)
 Protocol Stacks: IPX/SPX™: 802.2, 802.3, Ethernet II, 802.2 SNAP, TCP/IP, SMB

AppleTalk®: 802.2 SNAP and AppleTalk Phase II Only
 Network OS: Novell® NetWare® v3.2, 4.1, 4.11, 4.2, 5 (IPX/SPX), Windows® 95/98/Me (TCP/IP), Windows NT® 4.0 (TCP/IP), Windows 2000 (TCP/IP), Solaris™ LX, 2.5 or later (TCP/IP), Apple® System 7.5 or higher (DDP)

*Available first quarter 2002. Check with your local Canon-authorized Dealer for availability.
 **Approximate 3-second-per-page fax transmission time based on ITU-T No. 1 Chart (MMR, Standard Mode) at 33.6 Kbps modem speed when transmitting to another v.34 machine. The Public Switched Telephone Network (PSTN) currently supports 28.8 Kbps modem speeds or lower, depending on telephone line conditions.



Regional Offices

Canon Singapore Pte Ltd.
 79 Anson Road #09-01/06 Singapore 079906
 Tel: 6532 4400 Fax: 6221 1232

Canon Hong Kong Co. Ltd.

9th Floor The Hong Kong Club Building
 3A Chater Road Central Hong Kong
 Tel: 2739 0802 Fax: 2369 7701

Distributors & Representative Offices

Bangladesh: Flora Limited
 Adamjee Court Annex - 2 (4th Floor)
 119-120 Motijheel Commercial Area
 Dhaka 1000 Bangladesh
 Tel: 956 7846 Fax: 956 5454

Brunei: Interhouse Company
 No. 5 & 6 Bunut Jaya Complex Simpang 574
 Km 7 1/4 Jalan Tutong Bandar Seri Begawan 2890
 Negara Brunei Darussalam
 Tel: 653 001 Fax: 653 003

Cambodia: Royal Cambodia Co. Ltd.
 6th Floor Royal Group Building
 246 Preah Monivong Boulevard
 Phnom Penh Cambodia
 Tel: 428 414 Fax: 428 415

Hong Kong: Canon Marketing (Hong Kong) Co. Ltd.
 10th Floor Mirror Tower 61 Mody Road
 Tsimshatsui East Kowloon Hong Kong
 Tel: 2170 2828 Fax: 2739 6262

India: Canon India Pvt. Ltd.
 Neela Gagan Mandi Road
 Mehrauli New Delhi 110 030
 Tel: 680 6572-74 Fax: 680 7180

Indonesia: PT Samafitro
 Jalan Ir. H Juanda No. 8
 Jakarta 10120 Indonesia
 Tel: 345 5521 Fax: 384 4271

Malaysia: Canon Marketing (Malaysia) Sdn Bhd
 Block D, Perembas Square
 Saujana Resort Section U2,
 40150 Shah Alam
 Selangor Darul Ehsan
 Malaysia
 Tel: 7844 6000 / 7845 0055 Fax: 7845 0505

Maldives: SIMDI Company Pte. Ltd.
 MANAAM Building, No.2/1 Neeloafaru Magu
 20-04 Male Republic of Maldives
 Tel: 324 819 Fax: 310 549

Myanmar: IKM Pte Ltd.
 Covent Garden Post Office
 P.O. Box 2 Singapore 911631
 Tel: 6839 6730 / 6741 Fax: 6733 5255

Nepal: International Electronics Concern (P) Ltd.
 Kha 14 1st Floor Haratibhawan Putalisadak
 Ramshah Path Kathmandu Nepal
 P.O. Box 12588
 Tel: 421 991 Fax: 421 909

Pakistan: Shirazi Trading Company (Pvt) Ltd.
 2nd Floor Nadir House II Chundrigar Road
 Karachi Pakistan
 Tel: 242 4075 Fax: 241 4998

Philippines: Canon Marketing (Philippines) Inc.
 Marvin Plaza Building
 2153 Don Chino Roces Avenue
 Makati City Metro Manila Philippines
 Tel: 812 6047 Fax: 812 0067

Singapore: Canon Marketing (Singapore) Pte Ltd.
 No. 1 Jalan Kilang Timor
 Pacific Tech Centre #09-00
 Singapore 159303
 Tel: 6799 8888 Fax: 6273 3317

Sri Lanka: Metropolitan Office (Pvt) Ltd.
 12 Magazine Rd,
 Colombo 8, Sri Lanka
 Tel: 437 962, 437 797, 699 041
 Fax: 700 267

Thailand: Canon Marketing (Thailand) Co. Ltd.
 10th Floor Bangkok City Tower
 179/34-45 South Sathorn Road
 Bangkok 10120
 Thailand
 Tel: 344 9999 Fax: 344 9960

Vietnam: S.T. Alliance Pte. Ltd.
 357A / 21B1 Nguyen Trong Tuyen St.,
 Ward 1, Tan Binh Dist.,
 Ho Chi Minh City Vietnam
 Tel: 811 4475 Fax: 811 4474

Specifications are subject to change without notice. Option names and availability may vary by region. PostScript and PostScript 3 are trademarks of Adobe Systems Incorporated, registered in certain jurisdictions. Microsoft and Windows are registered trademarks of Microsoft Corporation in the United States and other countries. All other brand and product names are trademarks and/or registered trademarks of their respective owners.