

Canon

imageRUNNER™
1600



*Shown with optional accessories.



imageRUNNER™



THE DIGITAL SOLUTION OFFERING PERFORMANCE YOU DEMAND, IN A COMPACT PACKAGE YOU REQUIRE.

Presenting the new imageRunner 1600 from Canon – the next generation, digital multi-functional machine that gives your business a competitive edge.

Built upon Canon's unquestioned reliability and performance, the newly developed, network-oriented imageRunner 1600 offers 16 page-per-minute speed, with advanced print features. The imageRunner is able to handle these everyday office tasks with ease and efficiency. Tailored for your business, the imageRunner 1600 will reduce your business costs through lowered energy consumption and consumables usage.



*Shown with optional accessories.

Canon's imageRunner product offerings have a reputation for performance, image quality, and ease-of-integration that is virtually unmatched. The imageRunner 1600 comes with all the same award-winning attributes as its predecessors. The result is a unique workgroup solution designed to take your business to the next stage.

An All-star Player Sporting All The Tools

No One On Your Team Will Feel Stranded

The imageRUNNER 1600 comes equipped with a comprehensive set of system utilities designed to simplify operation and management for both end-users and network administrators. These tools provide easy device installation and network management, while supplying a level of device-status and job-management capabilities unmatched in the industry.

You Need To Do More Than Just Connect To The Network

To truly support customer requirements, networked devices must be easy to install, provide seamless integration with existing network-management applications, and permit management from anywhere in the enterprise. Canon's comprehensive solution to these customer requirements is embodied within Canon's NetSpot® Suite and Remote UI utilities.

Canon's NetSpot Suite consists of the following utilities:

NetSpot Console – NetSpot Console is a web-based installation and management utility capable of installing and managing Canon networked systems on most customer networks from anywhere within the enterprise. In addition to basic installation support, NetSpot Console delivers notification of device status conditions, such as low toner, paper jams, and others. For added convenience, NetSpot Console is also capable of managing third-party printers complying with the standard Printer MIB, thereby consolidating network device management via one utility.

NetSpot Job Monitor – To track progress and manage print jobs, Canon supplies NetSpot Job Monitor, which runs as an automated task in the Windows® System Tray, and can be configured to report job conditions based on administrator or end-user preferences.

Significant to NetSpot Job Monitor is its ability to deliver end-of-job notification to end-users, ensuring that they are informed of the completion of submitted work.

NetSpot Accountant – NetSpot Accountant is an optional utility capable of providing comprehensive job tracking and analysis for cost accounting and workflow optimization. Using NetSpot Accountant, network administrators can track a myriad of activity, including printing, and scanning, and bill internal or external clients for device utilization. NetSpot Accountant is ideal for any customer who desires to account for imageRUNNER 1600 device utilization.

In addition to these utilities, Canon also supplies plug-in modules for most popular enterprise-management applications in use today. Included in this list of supported applications are Microsoft® Management Console, CA-Unicenter TNG®, HP® OpenView®, Tivoli® NetView®, and BMC Patrol®. Through these plug-ins, Canon permits easy management of Canon networked devices from directly within the enterprise-management system console.

Remote UI – The Remote UI function turns any web browser into an imageRUNNER 1600 desktop command and control center. Simply enter the IP address of the remote device to get instant access to job status, address book, media options, program settings, and more. In addition, users can stop, start, or reprint jobs or view images that were previously stored in an internal mail box from anywhere on the network.

An Impressive Team

Canon's pioneering efforts in creating the digital multifunction marketplace has provided us with a considerable advantage in identifying emerging customer needs. This experience, combined with our exhaustive funding of new research and development, has allowed us to assume a



NetSpot Console Device List Selection



NetSpot Job Monitor - Status Notification Device



NetSpot Accountant - Device List Display



Remote UI

commanding position in today's office and production environments.

Our goal is simple: to provide the best solutions to your document- and information-management needs. We think you will agree that Canon's functional and integrated network capabilities set new benchmarks in the marketplace, and clearly enable our customers to drive greater levels of productivity, efficiency, and a competitive advantage.

With its compact footprint and increased functionality, the imageRunner 1600 is designed to fit seamlessly with the way you work.



Superior Image Quality Is Always Standard

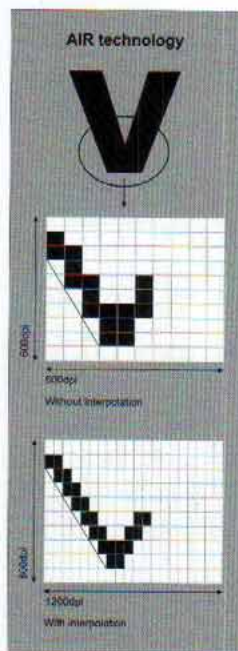
Canon's world-class leadership in image quality – capturing the highest level of detail in every document – is standard on every imageRunner 1600. Delivering output at 1200 x 600 dpi resolution, and print output at an astounding 2400 x 600 dpi resolution, the superiority of imageRunner 1600 output is clear to see.

A New Level Of Printing Functionality

The imageRunner 1600 is ideally suited to handle the printing requirements of workgroups and departments, with a print controller capable of handling Parallel, USB, 10/100 Ethernet connections, using PCL 5, PCL 6 and Postscript 3*print languages.

enhanced print quality and faster processing times. What this means to you is clearer, sharper output delivered to you quickly and effortlessly.

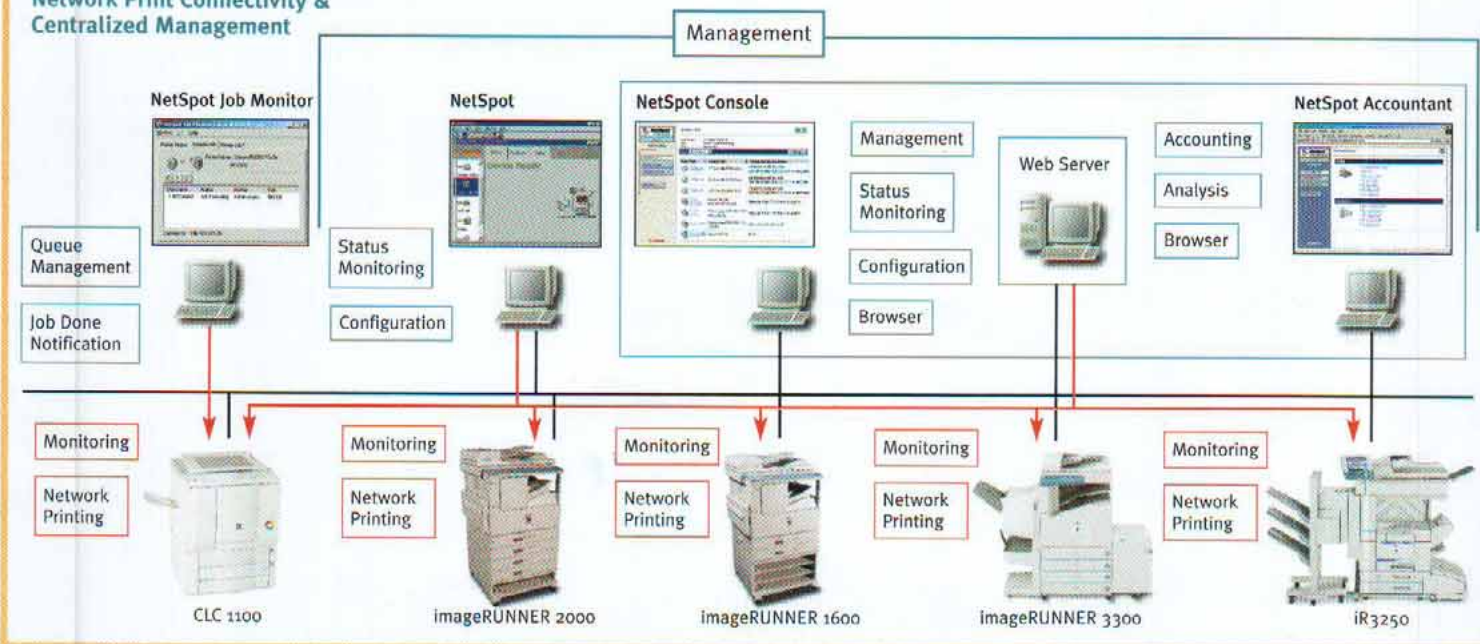
Canon has created print driver software designed with an easy-to-use user interface that is friendly for the novice, yet capable enough to handle the demands of power users. The driver software displays a dynamic image of the device, indicating installed hardware options, paper size, and paper levels. To further simplify use, Canon offers the ability to view page layout settings from within the driver prior to printing. Using this driver capability, users are assured their output will print as expected, with no surprises.



With a powerful 200 MHz RISC processor, the imageRUNNER 1600 is capable of both

* Postscript 3 available as option.

Network Print Connectivity & Centralized Management



imageRUNNER 1600 works with NetSpot® Suite to integrate seamlessly onto your network.



Raise Your Productivity To New Standards

Why Stand-alone When You Can Connect

Canon's clear advantage lies in our seamless integration with customer networks, giving users the ability to leverage system capabilities from their desktops. In choosing Canon products, your organisation will benefit from initial investment protection other manufacturers simply cannot match.

Advanced Input, Throughput, And Output Features

While most multifunction devices are content just to deliver the basics, the imageRunner 1600 offers an truly impressive level of input, throughput and output capabilities.

For maximum input productivity, an optional 50-sheet capacity Automatic Document Feeder (ADF) makes quick work of handling multipage originals.

The imageRunner 1600 offers an optional, internally mounted finishing unit for small office environments that require professional-looking, finished documents. This makes the imageRunner 1600 ideally suited for environments with limited space but still require the highest standard of finishing features.

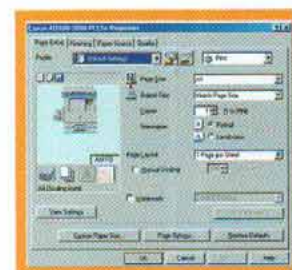
The imageRunner 1600 ships with a standard paper capacity of 300 sheets and offers the flexibility to support up to 1050 sheets. With support for feeding non-standard paper sizes and weights, the imageRunner 1600 can easily address the volume requirements of most small offices and small workgroups.



Internal Finisher



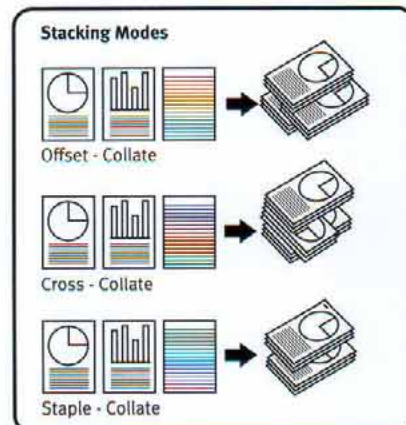
Paper Cassettes



Printer Driver Page Setup Tab



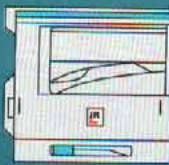
Automatic Document Feeder



Card Reader-E1



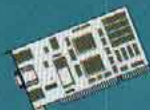
Network Interface Adapter - IN-E5



ADF-J1

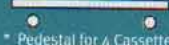
imageRUNNER™ 1600

Cassette Feeding Module - F1



Printer Board - N1

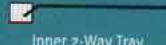
Cassette Feeding Module - H1



* Pedestal for 4 Cassettes



Finisher-L1



Inner 2-Way Tray



10 GB HDD



*32MB/64MB Memory

Flash ROM

PS Module

imageRUNNER 1600 Specifications

Main Unit

Type:	Digital, Multifunction Imaging System
Imaging System:	Laser Dry Electrostatic Transfer
Developing System:	Dry Monocomponent Toner Projection
Fixing System:	Heat Roller Fusing
Image Server Memory:	Standard 16MB RAM (Expandable to 48MB)
FCOT:	8.2 Seconds
Warm-up Time:	10 Seconds or Less From Sleep Mode 30 Seconds From Main Power Off
Print Speed:	16 ppm (A4); 9 ppm (A3)
Resolution:	600 dpi x 600 dpi
Resolution:	1200 dpi x 600 dpi (Enhanced)
Resolution:	2400 dpi x 600 dpi (Enhanced)
Halftone:	256 Gradations of gray
Magnification Reduction/ Enlargement:	50 - 200% (In 1% increments)
Paper Supply	
Standard:	Single 250 sheets Paper Cassette (250 sheets); Stack Bypass (50 sheets)
Optional:	Single 250 sheets Paper Cassette (250 sheets); Triple 250 sheets Paper Cassette (750 sheets)
Exposure Control:	Automatic or Manual
Multiple Copies:	1 to 99
Max. Original Size:	A3

Paper Weights:	60 to 90 g/m ² (Cassette) 60 to 120g/m ² (Stack Bypass)
Power Source:	230V AC, 50Hz, 6A
Drum:	OPC-Estimated Yield: 21,000 impressions
Toner:	Estimated Yield: 7,850 images (at 6% coverage)
Dimensions (H x W x D):	560mm x 615mm x 631mm
Weight:	36.5kg

Automatic Document Feeder-J1 (Optional)

Acceptable Originals:	B5R-A3
Capacity:	50 Sheets (80 g/m ² , A4)
Max. Paper Weight:	128 g/m ²

Cassette Feeding Unit-F1 (Optional)

Paper Capacity:	1 x 250 Sheets Paper Cassettes
Paper Size:	A3 to A5
Paper Weights:	60 to 90 g/m ²

Cassette Feeding Unit-H1 (Optional)

Paper Capacity:	3 x 250 Sheets Paper Cassettes
Paper Size:	A3 to A5
Paper Weights:	60 to 90 g/m ²

Finisher-L1 (Optional)

Number of Trays:	One Tray
Tray Capacity:	300 Sheets (A4)
Staple Position/Capacity:	Top Corner (15 Sheets)

Printer Board N1 (Optional)

Type:	Embedded Print/Network
Processor:	PowerPC405 200MHz RISC Processor
RAM	
Standard:	8Mb
Optional:	32Mb or 64Mb (Max: 72Mb)
Hard Disk:	Optional 10GB HDD
PDL Supports:	PCL 5E, PCL 6, Postscript 3 (Optional)
Internal Fonts:	45 Scalable Typefaces in 14 Typefaces Families: 32 TrueType Fonts
Interface Connections:	IEEE1284, USB 1.1

Ethernet Network Interface Adapter IN-E5 (Optional)

Interface Connections	
Optional:	RJ-45 (10/100Base-T)
Protocol Stacks:	IPX/SPX: 802.2, 802.3, TCP/IP, Apple Talk, NetBIOS/NetBEUI
Network OS:	Novell Netware v3.2, 4.1, 4.11, 4.2, 5.0, 5.1 (IPX/SPX), Windows 95/98/ME (TCP/IP), Windows NT4.0, 2000, XP (TCP/IP), Apple System 7.5 or higher (DPP), Solaris 1.1x, 2.5 or higher (TCP/IP)

* Check with your local Canon-authorized Dealer for availability.

Canon

Regional Offices -

Canon Singapore Pte Ltd.
79 Anson Road #09-01/05 Singapore 079906
Tel: 6532 4400 Fax: 6221 1232

Canon Hong Kong Co. Ltd.

9th Floor The Hong Kong Club Building
3A Chater Road Central Hong Kong
Tel: 2739 0802 Fax: 2369 7701

Distributors & Representative Offices -

Bangladesh:	Flora Limited Adamsjee Court Annex - 2 (4th Floor) 119-120 Motijheel Commercial Area Dhaka 1000 Bangladesh Tel: 956 7846 Fax: 956 5454
Brunei:	Interhouse Company No 5 & 6 Bunut Jaya Complex Simpang 574 Km 7 1/4 Jalan Tutong Bandar Seri Begawan 2690 Negara Brunei Darussalam Tel: 653 001 Fax: 853 003
Cambodia:	Royal Cambodia Co. Ltd. 6th Floor Royal Group Building 246 Preah Monivong Boulevard Phnom Penh Cambodia Tel: 426 414 Fax: 426 415
Hong Kong:	Canon Hong Kong Co. Ltd. 10th Floor Mirror Tower 61 Mody Road Tsimshatsui East Kowloon Hong Kong Tel: 2170 2828 Fax: 2739 6262
India:	Canon India Pvt. Ltd. Neela Gagan Mandi Road Mehrauli New Delhi 110 030 Tel: 2680 6572-74 Fax: 2680 7180

Indonesia:	PT Samaffitro Jalan Ir. H Juanda No. 8 Jakarta 10120 Indonesia Tel: 345 5521 Fax: 384 4271
Malaysia:	Canon Marketing (Malaysia) Sdn Bhd Block D, Peremba Square Sajjana Resort Section U2 40150 Shah Alam Selangor Darul Ehsan Malaysia Tel: 7844 6000 / 7845 0055 Fax: 7845 0505
Maldives:	SIMDI Company Pte. Ltd. MANAAM Building, No.2/1 Neeloafaru Magu 20-04 Male Republic of Maldives Tel: 324 819 Fax: 310 549
Myanmar:	IKM Pte Ltd. Covent Garden Post Office P.O.Box 2 Singapore 911631 Tel: 6639 6730 / 6741 Fax: 6733 5255
Nepal:	International Electronics Concern (P) Ltd. Kha 14 1st Floor Haratibhawan Putalisadak Ramshah Path Kathmandu Nepal P.O.Box 12588 Tel: 421 991 Fax: 421 909
Pakistan:	Shirazi Trading Company (Pvt) Ltd. 2nd Floor Nadir House II Chundrigar Road Karachi Pakistan Tel: 242 4075 Fax: 241 4998
Philippines:	Canon Marketing (Philippines) Inc. Marvin Plaza Building 2153 Don Chino Roces Avenue Makati City Metro Manila Philippines Tel: 812 8047 Fax: 812 0067

Singapore:	Canon Marketing (Singapore) Pte. Ltd. No.1 Jalan Kilang Timor Pacific Tech Centre #09-00 Singapore 159303 Tel: 6799 8888 Fax: 6273 3317
Sri Lanka:	Metropolitan Office (Pvt) Ltd. 12 Magazine Rd, Colombo 8, Sri Lanka Tel: 437 982, 437 797, 899 041 Fax: 700 267
Thailand:	Canon Marketing (Thailand) Co. Ltd. 10th Floor Bangkok City Tower 179/34-45 South Sathorn Road Bangkok 10120 Tel: 344 9999 Fax: 344 9960
Vietnam:	Canon Singapore Pte. Ltd. Ho Chi Minh City Representative Office 11 Me Linh Square, Ground Floor District 1, Ho Chi Minh City, Vietnam