

WORKiO – Options & Specifications

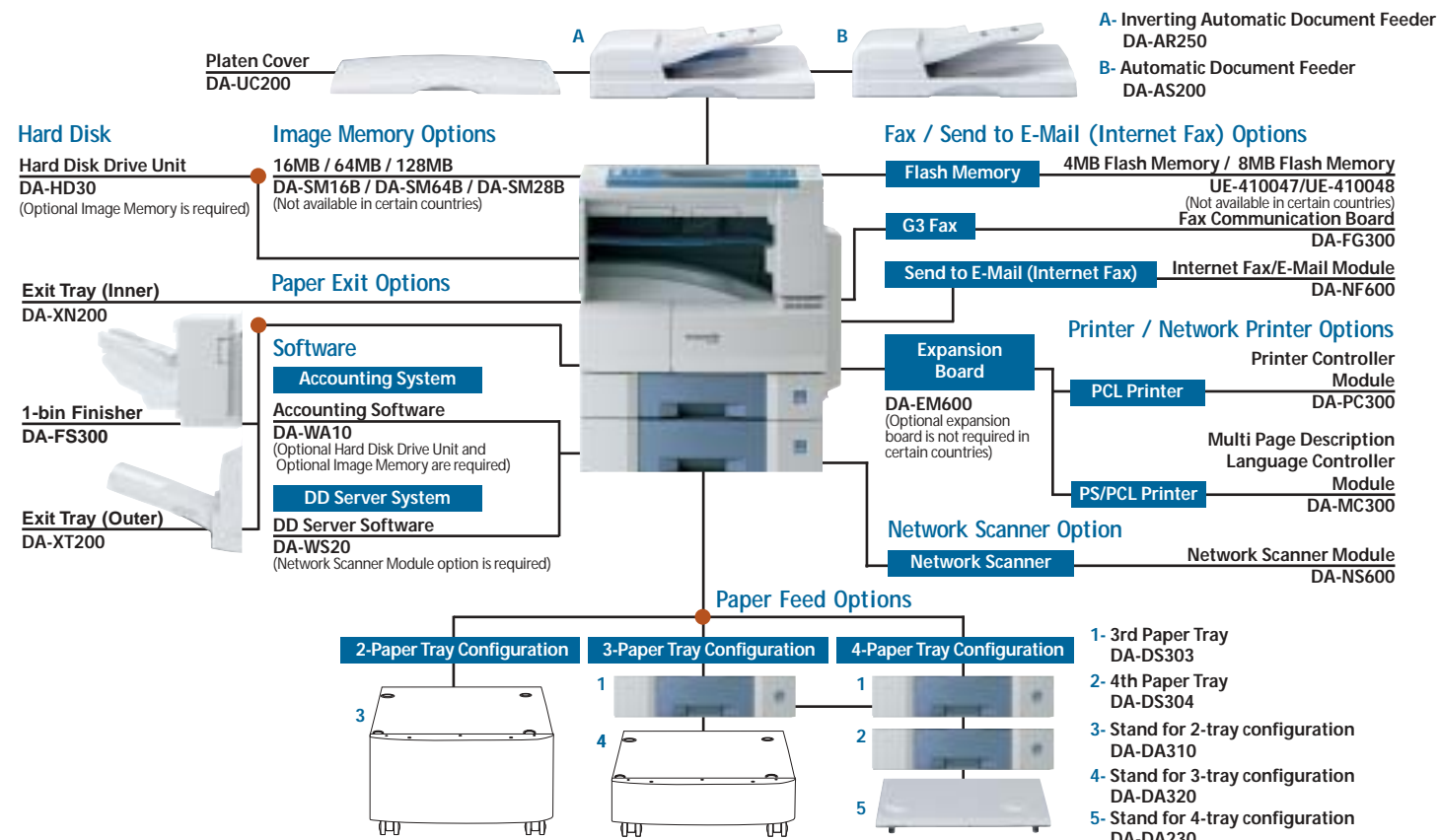
WORKiO

Panasonic
ideas for life

digital imaging systems

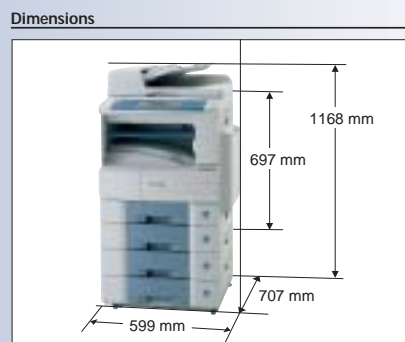
DP-2310

the **SMART** way to work



DP-2310 Specifications

General function	
Type	Desktop
Print Process	Laser Indirect Electrostatic
Developing Process	Dry Dual Component
Automatic Document Feeder (option)	50 sheets (A4, 75 g/m ²)
Paper Feed	Std. 550 sheets paper tray unit x 2 + 50-sheet bypass Max. 2,250 sheets (75 g/m ²) with option
Power Requirements	AC 220-240 V 50/60 Hz, 6.3A
Power Consumption	Max.: Less than 1.5 kW Energy Saver mode: Approx. 28 Wh Sleep mode: Approx. 18 Wh
Dimensions (W x D x H) ¹⁾	599 x 707 x 697 mm
(H to Platen-glass)	
Weight (Excluding optional equipment) ¹⁾	Approx. 72 kg
Digital Copier function	
Warm-up Time	Approx. 30 sec.
First Copy Time	Approx. 4.5 sec. (A4)
Resolution	600 dpi
Gray Scale	256 steps
Multi Copy Speed ²⁾	up to 23 cpm
Maximum Original Size	A3
Copy Size	A3, B4, Foolscap, A4, A5
Copy Ratio	Enlargement (fixed) 200%, 173%, 141%, 122%, 115%
	Reduction (fixed) 87%, 82%, 71%, 58%, 50%
Zoom (variable)	25-400% (in 1% increments)
Multiple Copy	1 to 999, Automatic reset to 1
Exposure Controller	Text, Text / Photo, Photo
Sort Memory	Uses JBIG Compression
	Standard 16MB
	Optional Base Memory (16MB) plus 16MB ³⁾ /64MB ³⁾ /128MB ³⁾ (Max. 144MB) 12GB (with optional HDD)
Network Printer function	
Printer Interface	Ethernet 10Base-T/100Base-TX, USB 1.1
Standard Network Printing	Windows GDI
Printing Speed ²⁾	up to 23 ppm
Paper Size	A3-A5
Printing Resolution	up to 1,200 dpi equivalent x 600 dpi (PCL, PS), up to 600 dpi x 600 dpi (GDI)
Printer Memory	20MB
Page Description Language (option)	PCL 5e, PCL 6, PostScript [®] 3 [™]
Compatible Operating Systems	Windows [®] XP/2000, 98, Me, Windows NT [®] 4.0, MacOS 8.6-10.1 (PS only)
Network Scanner function (Option)	
Network Scanner Interface	Ethernet 10Base-T/100Base-TX
Scanning Size	A3-A5
Scanning Resolution	150 dpi x 150 dpi, 300 dpi x 300 dpi, 600 dpi x 600 dpi
Coding Scheme	JBIG / MMR / MR / MH
Data Format	TIFF
G3 Fax function (Option)	
Compatibility	ITU-T Group 3, ECM
Modem Speed	33.6-2.4 kbps with automatic fallback
Coding Scheme	JBIG / MMR / MR / MH
Transmission Speed	Less than 3 sec. ⁴⁾
Scanning Speed	0.6 sec. (A4 portrait in Standard or Fine mode with ADF) ⁵⁾
Scanning Resolution	Standard: 8 dots/mm x 3.85 lines/mm Fine: 8 dots/mm x 7.7 lines/mm Super Fine: 16 dots/mm x 15.4 lines/mm 600 dpi, 600 dpi x 600 dpi
Effective Scanning Width	292 mm
Recording Resolution	600 x 600 dpi
Standard Memory	2MB (approx. 120 pages) ⁶⁾
Optional Memory ³⁾	Base memory plus 4MB (240 pages) ⁶⁾ /8MB (480 pages) ⁶⁾
No. of Auto Dialers	200 (Max. 1,000 with optional HDD)
Send to E-Mail / Internet Fax function (Option)	
Compatibility	IETF RFC 2305, ITU-T T.37
Communication Protocol	TCP/IP, SMTP, POP3, MIME
Network Connectivity	100BASE-TX / 10BASE-T Ethernet (IEEE802.3)
Data Format	TIFF-FX (Profile S/F/J), PDF



Notes

¹⁾ Dimensions and weight are approximate.
²⁾ Speeds are contingent upon applications, machine configuration, and status.
³⁾ May not be available in certain countries.
⁴⁾ Transmission time applies to memory transmission of text data using only ITU-T Image No.1 between the same models at maximum modem speed. Transmission time may vary in actual usage. Usually public telephone lines can only support communication speeds of 28.8 kbps or lower. Via PBX, transmission speed may fall back to a lower speed.
⁵⁾ Scanning speed applies to the feeding process from the top to the end of a single page test chart. The time for the feeding process does not include the time that it takes for the top edge of the page to reach the scanning point and page ejection. Time for entire storing process is not applied.
⁶⁾ Based on ITU-T Image No.1 scanned in Standard mode.
 Design and specifications are subject to change without notice. Not all options may be available at the time of notification.
 Microsoft[®] Windows[®] and Windows NT[®] are registered trademarks of Microsoft Corporation.
 Adobe[®] PostScript[®], PostScript[®] 3[™], PDF and PostScript logo[®] are trademarks of Adobe Systems, Inc.
 PCL[®] is a registered trademark of Hewlett-Packard.
 WORKiO[®] is a trademark of Matsushita Electric Industrial Co., Ltd.
 All other brand or product names are the property of their respective holders.

23 cpm / 23 ppm
Digital Copying / Printing

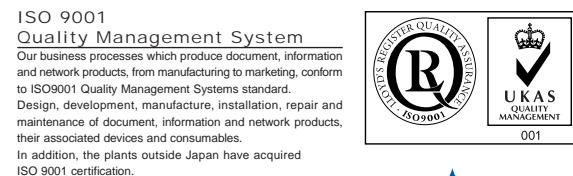
Standard Network Printing /
Document Manager Software

600 dpi High-speed
Network Scanning Capability

Internet Fax Capability
"Send to E-Mail"



Panasonic[®]



As an Energy Star[®] Partner, Panasonic has determined that this product meets the Energy Star[®] Guidelines for energy efficiency.



Printed on recycled paper

WORKiO[™]
DIGITAL IMAGING SYSTEMS

Extra-Large Touch-Screen Interface and Friendly GUI
"Built-in" Duplex Unit
Space-Saving Inner Tray Design

WORKiO network-ready solutions

Welcome to the world of WORKiO digital imaging platforms - the true convergence of digital communications and cutting-edge imaging technology. With every new generation, WORKiO solutions deliver more versatility, higher reliability, greater ease of use, and expanded network connectivity to your business. From our flagship department-class digital hubs and "all-round" multifunction workgroup platforms to high-performance colour printers and document scanners, WORKiO again sets new standards in intuitive operation, durability, performance, and network integration.

Our newest addition to the WORKiO product lineup is the WORKiO DP-2310, designed to take the most difficult job and simplify it, freeing up your time to focus on other priorities. Its advanced digital capabilities, intuitive user interface, and efficient speed, enable the Panasonic WORKiO DP-2310 to truly deliver productivity to your business, with a touch of a button.

Whether you are focused on today's needs or you are looking ahead to the future, the Panasonic WORKiO DP-2310 is always "the **SMART** way to work"

Face of the Next Generation

A true multifunction digital imaging system, the WORKiO DP-2310 provides you with solutions. High quality printing and efficient copying are essential to your document needs. The WORKiO DP-2310 gives you these capabilities and more... in one easy-to-use product. It incorporates the same advanced technology, versatility, and intuitive operation found in our department-class digital hubs, in a reliable compact platform with performance that precisely fits your needs. Serving as a complete document processing and management solution, the DP-2310 is ready to bring the digital imaging revolution to your workplace. The WORKiO DP-2310's advanced features and multifunction capabilities are easily accessible thanks to a revolutionary visual user interface displayed on a spacious half-VGA size touch panel. Everything is arranged according to the natural workflow and organised in an intuitive tabbed interface that enables walk-up users to complete even the most challenging applications. The WORKiO DP-2310 is a true multifunction device right out of the box with standard GDI Network Printing, Network Interface card, and a built-in Duplex Unit with output expandable to two inner trays. Its advanced technology combines all this functionality in a single console, exceeding expectations. The WORKiO DP-2310 is "the smart way to work" for your workplace.



WORKiO – the Copying Solution & Network Printing Solution



meet the friendliest interface in the office

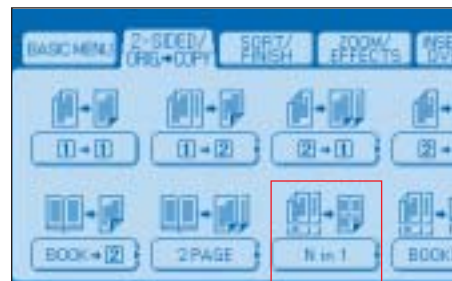
Designed to let even a first-time user take full advantage of the many digital copying conveniences, the new WORKiO GUI sets a new standard in ease of use. The left-to-right menu arrangement follows the natural flow of work and takes the complexity out of the most challenging copy jobs. In the spacious layout of the large touch-screen panel, settings are presented with easy-to-understand graphics to simplify your selection.

fast, high-quality copying

From routine copying of meeting notes to the production of stapled multi-page reports for the entire department, WORKiO DP-2310 delivers up to 23 A4-size copies per minute and features A3-size paper handling as standard. The combination of 600 x 600 dpi resolution printing and 256 grey scale half tones offers the ultimate in presentation. The unique new Panasonic image stabilising system uses advanced technology to control the laser exposure time improving image quality. ■

innovative interface

The intuitive tabbed interface on the extra-large half-VGA LCD display (640 x 240 pixels) provides quick access to basic copying functions as well as walks users through advanced settings such as image rotation and finishing options. A graphical confirmation feature helps prevent costly copying errors and even sends a completion notice to the user. ■



N-in-1 copy

N-in-1 Copy is a cost efficient feature. Copy multiple originals onto a single sheet of paper.



versatility and convenience

Enjoy amazing versatility with built-in duplex and Optional Inverting Automatic Document Feeder* as well as handy functions such as N-in-1 Copy, Zoom and Image Rotation. The convenient Sort Copy function electronically collates copies as shifted and rotated sets. ■

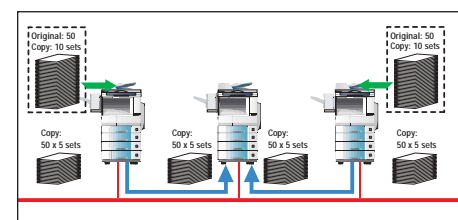
*This is standard in certain countries.

copying connectivity

Built-in connectivity enables advanced capabilities such as Tandem Copy* and Remote Copy*. ■

complete from start to finish

The optional finishing capabilities turn your WORKiO into a complete document solution, from start to finish. Before you press start, the DP-2310 lets you check finishing selections to prevent costly mistakes. ■



Tandem Copy*

For extra-large jobs with tight deadlines, Tandem Copy lets you harness the power of multiple WORKiO platforms to work jointly on a single job.

* Optional Hard Disk Drive Unit and optional Image Memory are required. These functions are available only between DP-3010/2310 and DP-3010/2310.

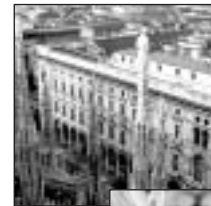
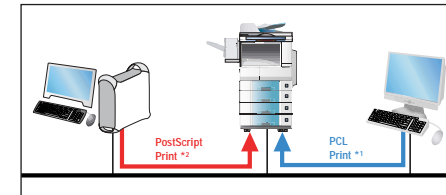


Image Enhancement Technology

Original WORKiO technology makes sure that very detailed graphics and small text are copied in clear detail.



leveraging your network with connectivity

With the standard 10Base-T/100 Base-TX Ethernet interface, the DP-2310 provides printing power and performance to all networked PCs. The standard USB 1.1 interface allows for direct connection to a dedicated PC.



*1 Optional PCL Printer Controller Module is required.

*2 Optional Multi-Page Description Language Controller Module is required.

high-quality 23-ppm network printing and A3-size capability

The network-ready DP-2310 lets your LAN users access up to 23-ppm (A4) printing speed and high-quality output thanks to Panasonic's Image Enhancement Technology. This A3-size network printer takes advantage of the built-in automatic duplex unit to provide 2-sided printing. In addition to the standard Windows GDI printing, optional modules and drivers expand printing versatility with PCL*1 and PostScript*2 capability. ■

versatile print driver

Easy-to-install print drivers empower users with full control of versatile printing functions right from the desktop. From the intuitive tabbed interface to the on-screen graphical preview of job settings, everything is designed to maximise ease of use and eliminate costly errors. ■

true system integration

For today's networked business environments, the DP-2310 responds with the Console Management System, providing users with advanced features and enhancing network connectivity. ■

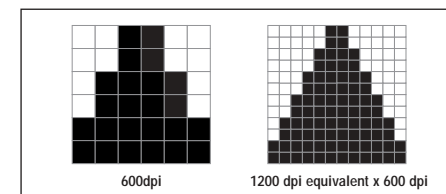
"smart" economy and efficiency

The optional hard disk drive unit for storage of frequently used documents, Intelligent Job Control Management for detailed print queue management, a utility to monitor the WORKiO's platform status including toner and paper supply, the space-saving "wingless" inner tray design... these are just a few of the intelligent WORKiO features that contribute to improved productivity. The WORKiO DP-2310 also enables administrators to efficiently set up and configure the system via the network, and offers easy-to-install optional Network Accounting Software to track and log the volume of WORKiO usage by user and by department. ■



2-sided copying for additional savings

The built-in duplex unit enables copying on both sides for higher productivity and economical savings. With the Optional Inverting Automatic Document Feeder*, duplex copying is improved. As an added benefit, a notice can be automatically printed, telling document readers to "See the other side".



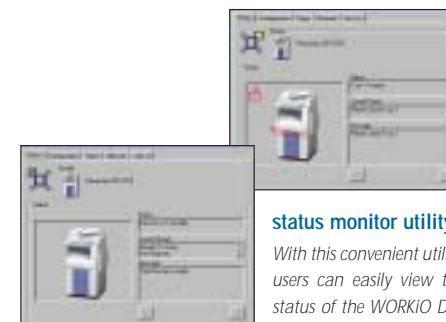
improving images pixel by pixel

By producing images with the equivalent of twice the number of dots per inch of a 600dpi printer, WORKiO DP-2310 gives documents smoother curves and diagonals and banding-free gradations.



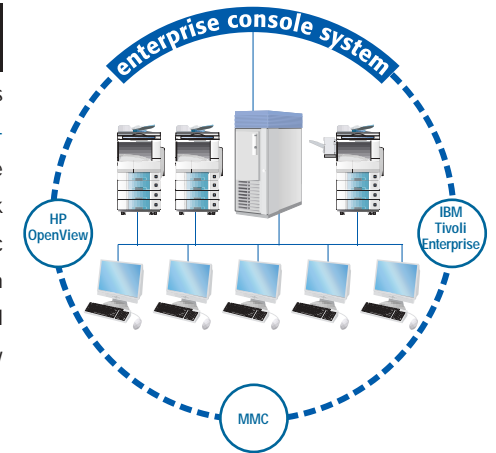
check finishing selections

You can confirm all settings from size and "Zoom/Effects" to "Sort/Finish" on the screen and prevent wasteful miscopying.



status monitor utility

With this convenient utility, users can easily view the status of the WORKiO DP-2310 including toner and paper supply.



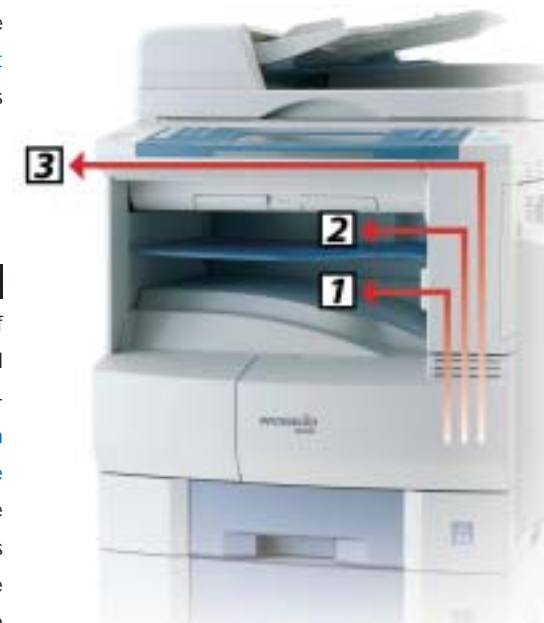
systematic issue identification and resolution

Incorporating MetaConsole technology licensed from Netaphor Software, the DP-2310 can be used as a device that can be managed by popular Enterprise Console Systems to maintain peak system performance while reducing support costs.

* MetaConsole™ is a registered trademark of Netaphor™ Software Inc.

* Tivoli™ is a registered trademark of IBM Corporation.

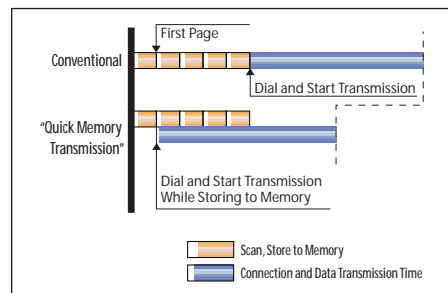
* Open View is a registered trademark of Hewlett Packard.



maximum 3-way paper output

Automatically separate output by function to a maximum of three trays for easy sorting and pickup. For example, incoming faxes can be assigned to the inner tray (1), printer output can be assigned to the optional inner tray (2), and copy output can be assigned to the optional outer tray/finisher (3).

WORKiO – the Scanning & Document Distribution Solution

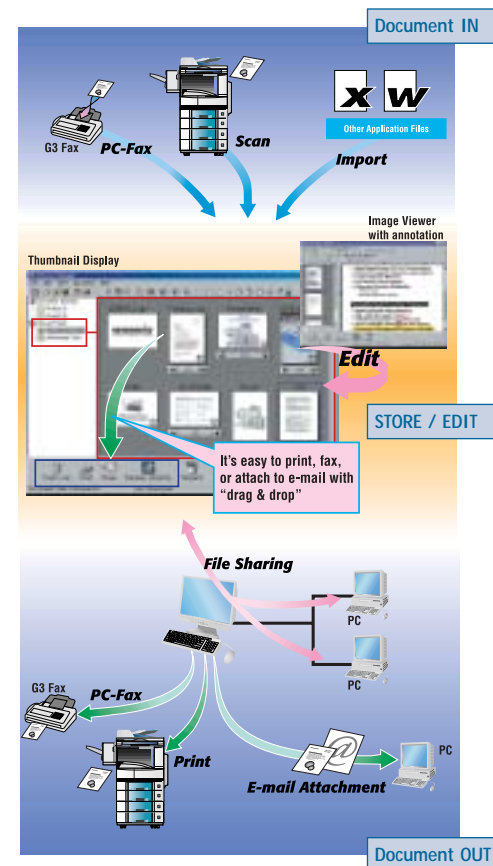


“Quick Memory Transmission”

For fax transmission of multiple pages, the WORKiO DP-2310 begins transmitting while scanning large documents.

high-speed network scanning

With the optional Network Scanning Module, the WORKiO DP-2310 can be configured as a high-speed network scanning solution that revolutionises document distribution. The intuitive WORKiO interface makes it easy to send scanned documents to a PC or Server on the LAN. Scanned documents can later be printed at near-original quality. Thanks to the high-resolution scanning at 600 x 600dpi with 256 levels of grey scale, clear crisp print quality is achieved. With an optional inverting ADF unit, 2-sided scanning up to A3-size is possible. ■



scanned document management

When a scanned document arrives, the Document Manager software notifies the user and automatically opens the file. Image Viewer enables the user to easily view, annotate or attach memos to the file. With a simple drag and drop operation, users can manage and edit documents from their desktop, and then share them with other users.

desktop document management

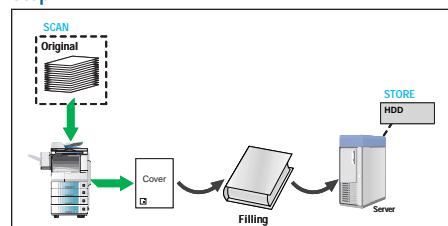
The WORKiO DP-2310 also provides Document Manager software for efficient management, editing and sharing of scanned documents. For very large-scale document management based on a client-server model, the optional DD Server System* takes your business a step closer to paperless document management. ■

*Optional Network Scanner Module is required.

DD Server Software*

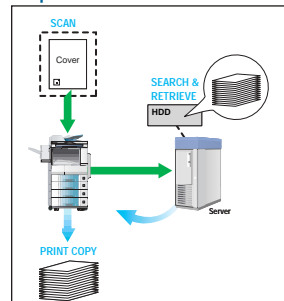
Saving paper and reducing storage space needs, DD Server software* is easily installed in a file server for more efficient network document sharing. Using the optional DD Server software*, documents are scanned with DP-2310 and sent to the server for storage. At the same time, a single cover sheet stamped with the DD bar code to identify the scanned document is printed out for filing by the user. Later users can quickly retrieve and print out the entire document just by scanning the DD code-stamped cover sheet.

Step 1:



Original document is scanned, and WORKiO sends the entire document in digitised form to the DD Server. It also prints out a single cover sheet with a special DD code. This ID cover sheet is filed by the user.

Step 2:

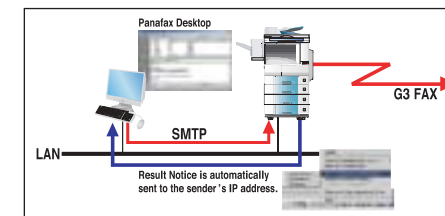


Retrieval is simple and quick. Just scan the cover sheet with the DD code and the server retrieves the file for printing.

fast faxing

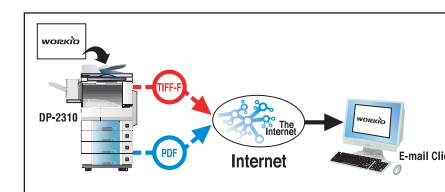
Transform the DP-2310 into a high-performance fax station. The optional fax communication kit adds fast 33.6 kbps Super G3 fax capability accelerated by 0.6-sec* “Quick Scanning” for shorter preparation time and Quick Memory Transmission. High 600 x 600 dpi communication resolution preserves the high scanning resolution of WORKiO for accurate reproduction at the destination. One of the newly introduced smart features of the DP-2310 is a function that automatically switches to fax mode by determining that a telephone number is being entered when a number over 6 digits is keyed in. ■

*A4 portrait in Standard or Fine mode with ADF.



Panafax Desktop software

PC Fax lets users send documents from their PCs directly to fax machines. By eliminating the step of printing out a hard copy and then running it through the fax machine, PC Fax can save valuable paper, labor and time.



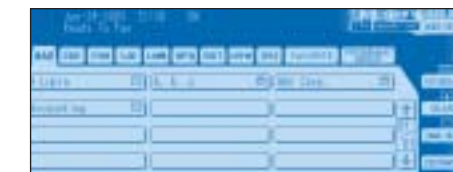
new image format versatility

DP-2310 can be set up to scan images in standard TIFF or the popular PDF format and transmit them as e-mail attachments.

internet faxing

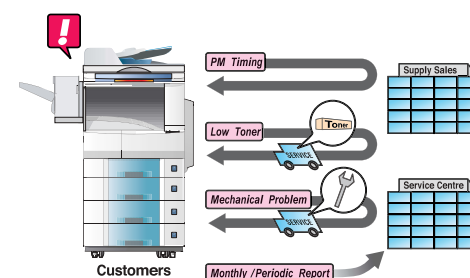
With the Internet Fax/E-Mail option, the DP-2310 can be set up to scan documents as TIFF images or PDF files and transmit them as e-mail attachments. For example, with the “Send to E-Mail” feature, scanned documents can be sent to other Internet Fax-capable* platforms or e-mail clients anywhere in the world. Simultaneous distribution of the same document to multiple e-mail clients and G3 fax terminals is easy using the “Mixed Broadcast” feature. The convenient fax/e-mail utilities such as the DP-2310’s Address Book enhance your fax capabilities. WORKiO’s Internet Fax/E-Mail option also provides a fax/e-mail gateway function, which automatically routes incoming faxes to the recipient’s e-mail inbox. The attached image file can easily be opened and viewed with a standard image viewer. With Panafax Desktop software, users can send documents directly from their PC via the LAN and DP-2310 gateway to G3 fax machines around the world. ■

*In the case of the Send to E-mail (Internet Fax) transmission at 600dpi and/or A3 documents, reception may not be possible in some instances due to reception-side functions.



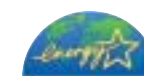
one-touch document routing

The DP-2310’s Address Book allows up to 1,000 addresses to be programmed (optional Hard Disk Drive Unit and optional Image Memory are required.) Fax numbers e-mail addresses as well as network addresses can be easily stored using the “soft” keyboard. Also a convenient utility supports easy creation of a standardised e-mail header.



“Check & Call”

The convenient “Check and Call” system enables service centres to stay on top of your printer status and performance. For example, the built-in automatic report function notifies your service centre when toner is running low or if any mechanical problems need attention.



the solution that is friendly to the environment

The EnergyStar-compliant DP-2310 contributes to lower Total Cost of Ownership (TCO). In sleep mode, energy requirements drop to virtually nothing. The work environment is also quieter and cleaner thanks to reduced noise and ozone emissions.

the solution you can depend on

Reliability is always top priority for the entire line of Panasonic WORKiO products. Especially in the case of a multifunction digital hub, we know that downtime is costly. For this reason, every aspect of the WORKiO DP-2310 is engineered to last. Also it features an easy-access design to reduce time required for routine toner replacement and other servicing tasks. ■

the solution we help maintain

By automatically reporting the status of toner level and various key mechanical issues to a service centre, “Check & Call” can prevent costly downtime caused by simple problems. The WORKiO DP-2310 also incorporates the Remote Diagnostic System* that enables technicians to quickly identify problems and provide solutions. ■

*These functions are not available in certain countries.

service friendly

Easy maintenance access is one of the distinctive features of WORKiO’s “service friendly” concept.



Replacing toner is easy with front panel access. Just open, remove the waste toner container, and then twist and slide out the toner cartridge.